



Bathing establishment Fact Sheet

Bathhouse name	BIANCAMANO
Address	Piazza America,66
City	Marina di Pietrasanta (Lu)
Contacts	Tel. +39 058421661 e-mail info@bagnobiancamano.it
Website	http://www.bagnobiancamano.it/index.php

TESTED BY: [Handy Superabile - Social Promotion Association](#) in summer 2023

Please note The following information refers to the verification date shown at the bottom of each card. **The Association** is not responsible for any significant changes made by the property after the visit.

Summary

Bathing establishment Fact Sheet	1
Arrival at the facility.....	2
Private/public parking.....	2
Pathway from the parking lot to the main entrance	2
Reception.....	3
Bar/restaurant	4
Internal Pathways and common services.....	5
Internal Pathways	5
Toilet and shower accessible to guests with reduced mobility	5
Changing room	7
Beach.....	8
Children's play area	9
Swimming pool	10
Doctors' Offices/Healthcare Facilities	11


Project carried out with the contribution of the





Arrival at the facility

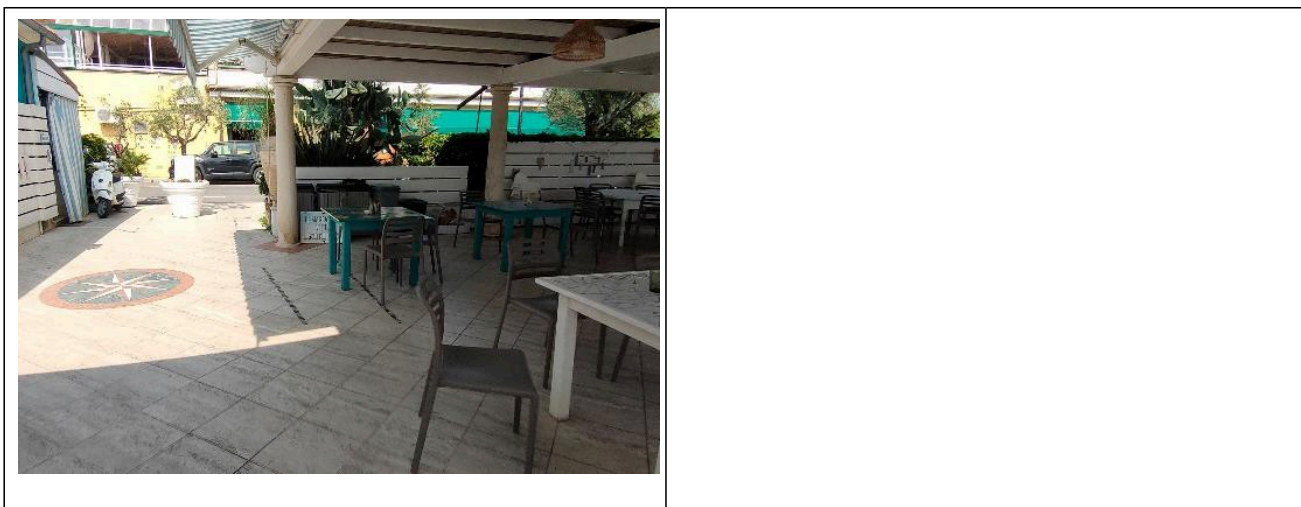
Private/public parking

Presence of private parking	NO
Public parking nearby	YES
Type of public car park	asphalt
Presence of a parking space reserved for people with disabilities in the public car park	YES
	

Pathway from the parking lot to the main entrance

Pathway from the car park to the entrance	Flat
There are markers and tactile maps	NO
Usable door/entrance width	more than 90 cm





Reception

Umbrella booking system	<input type="checkbox"/> Via web <input checked="" type="checkbox"/> By phone <input checked="" type="checkbox"/> On-site
Presence of multilingual staff	Not detected
Presence of plant plan with key to services available	NO
Presence of visuo -tactile map	NO
Bulletin board/information panels at an average height of 130 cm in a well-lit area and font size at least 14 dpi with a contrast ratio greater than 4.5:1	NO
The staff attended training courses on welcoming people with different disabilities	NO





Bar/restaurant

Type of venue	Bar/restaurant
Access to the premises	Flat
Usable door/entrance width	more than 90 cm
Bar counter	more than 100 cm
Types of tables	4-legged
Space underneath the tables from the floor	65 cm
Multilingual menu	NO
Menus with large print fonts	NO
Braille menu	NO
Table service for people with disabilities	YES
Availability of gluten-free food	<input type="checkbox"/> bread <input type="checkbox"/> pasta <input type="checkbox"/> biscuits <input checked="" type="checkbox"/> ice cream <input type="checkbox"/> Pre-packaged foods





Internal Pathways and common services

Internal Pathways



Indicate whether the pathways connecting the entrance to the beach are flat or with ramps in addition to those already described	Obstacle-free paths
--	---------------------

Toilet and shower accessible to guests with reduced mobility

Number of toilets accessible/usable by guests with reduced mobility	1
Access to the premises	Flat
Usable width of the entrance door	85 cm
WC height	50 cm
Open front toilet seat	YES
Support handles	to the left of the toilet
Flexible hand shower at the side of the toilet	NO
Free space on the sides of the toilet	left 26 cm





	right 21 cm frontal 82 cm
Electric doorbell/phone	YES
Washbasin with space underneath for wheelchair	62 cm
Height from the ground on the bottom edge of the mirror	101 cm
Baby changing table	Choose an item.
	
Accessible shower available for guests with reduced mobility	NO but there is an outdoor shower flush with the floor
Access to the shower room if separated from the toilet room	Flat
Useful width of the door/entrance gate if separated from the toilet room	more than 90 cm
Shower type	open-type
Floor-level shower	YES
Shower chair	missing
Grab bar	missing
Presence of shower head or ups and downs	fixed shower head
Electric doorbell/phone	NO





Changing room

Accessible changing room available for guests with reduced mobility	YES
Access to the premises	by ramp length 358 cm, width 110 cm, gradient 10 %
Usable door/entrance width	more than 90 cm
Size of the dressing room	width 150 cm and depth 180 cm
Presence of a cot	NO
Coat rack height from the ground	165 cm






Beach

Type of beach	sand
Access to the beach	Flat
Walkway to reach the umbrellas	YES
Type of walkway	cement
Walkway width	90 cm





Removable Platform between the walkway and the umbrella station to facilitate the passage and parking wheelchair	YES
Amphibious beach chair available for helping people with reduced mobility to enjoy swimming (owned by the establishment or by association)	YES
	

Children's play area

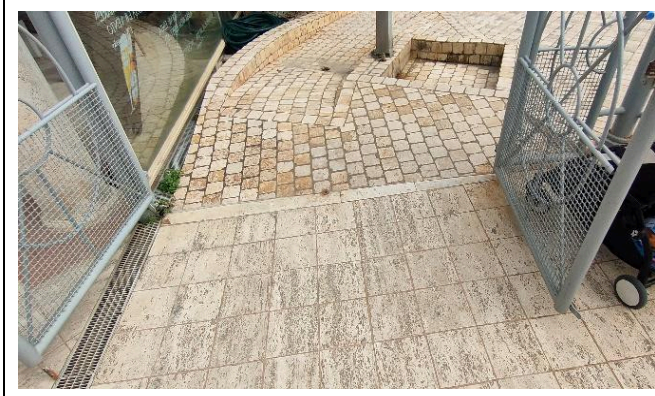
Children's play area	inaccessible to children with reduced mobility due to sandy bottom
There are games for children with reduced mobility	NO

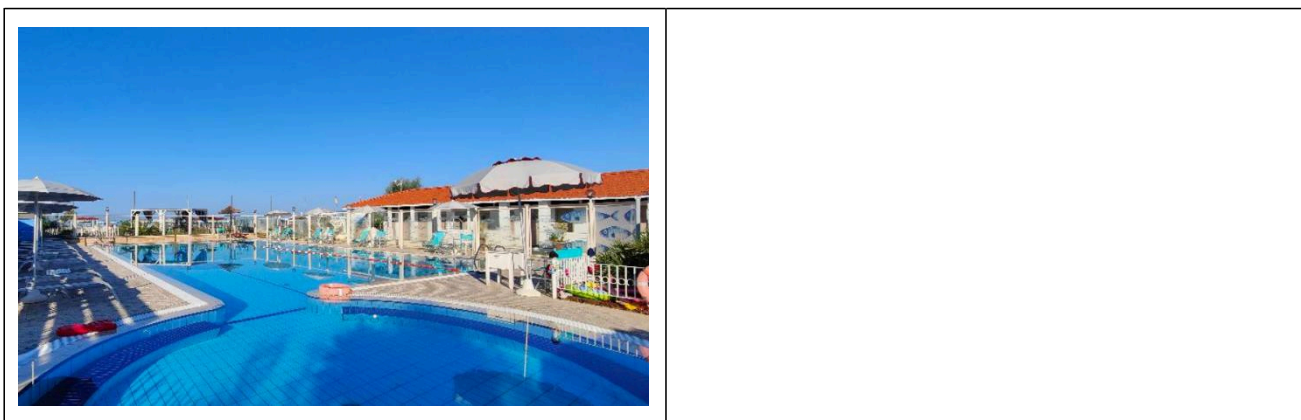




Swimming pool

The property has a swimming pool	YES
Access to the swimming pool	by ramp length 80 cm, width 80 cm, slope 13.8%
Useful width of the entrance gate	more than 90 cm
Access to the pool	with ladder
Bathing aids for guests with reduced mobility	amphibious chair





Doctors' Offices/Healthcare Facilities

Hospitals near the facility	Ospedale Versilia SS1 Via Aurelia n. 335 55049 Lido di Camaiore LU Tel. 0584/6051
Other Healthcare Facilities	<p>Distretto Sanitario ASL 12 Pietrasanta Via Martiri S. Anna 11 Tel. 05846058823</p> <p>Croce Verde Via Risorgimento, 1 Forte dei Marmi Tel. 058484013 free dialysis and first aid service for white codes</p> <p>Emergency medical service Via Martiri S. Anna Pietrasanta Tel. 0584 616774</p> <p>Misericordia Via Mazzini Pietrasanta Tel. 058470055</p> <p>Medical service Casa di cura "San Camillo" Via P.I. da Carrara, Forte dei Marmi 37 Tel. 0584 7391</p> <p>Dialysis service c/o Croce Verde Viale Italico at the corner of Via Risorgimento Forte dei Marmi Tel. 058484013 affiliated with AUSL</p>

TESTED BY: Handy Superabile Social Promotion Association in summer 2023

